

GLIDDEN CEMETERY

ORIGINAL PLAT

FIRST ADDITION

A	B	10	9	8	7	6	5	4	3	2	1	C	D	10	9	8	7	6	5	4	3	2	1
E	F	11	12	13	14	15	16	17	18	19	20	G	H	11	12	13	14	15	16	17	18	19	20
J	K	10	9	8	7	6	5	4	3	2	1	L	M	10	9	8	7	6	5	4	3	2	1
N	O	11	12	13	14	15	16	17	18	19	20	P	Q	11	12	13	14	15	16	17	18	19	20

11	10	9	8	7	6	5	4	3	2	1												
12	13	14	15	16	17	18	19	20	21	22	23	24	25	26	27	28	29	30	31	32		
33	32	31	30	29	28	27	26	25	24	23	22	21	20	19	18	17	16	15	14	13	12	11

10	9	8	7	6	5	4	3	2	1
11	12	13	14	15	16	17	18	19	20
30	29	28	27	26	25	24	23	22	21
10	9	8	7	6	5	4	3	2	1
11	12	13	14	15	16	17	18	19	20

10	9	8	7	6	5	4	3	2	1
11	12	13	14	15	16	17	18	19	20
30	29	28	27	26	25	24	23	22	21
10	9	8	7	6	5	4	3	2	1
11	12	13	14	15	16	17	18	19	20

21	20	19	18	17	16	15	14	13	12	11	10	9	8	7	6	5	4	3	2	1
22	23	24	25	26	27	28	29	30	31	32	33	34	35	36	37	38	39	40	41	42
63	62	61	60	59	58	57	56	55	54	53	52	51	50	49	48	47	46	45	44	43
21	20	19	18	17	16	15	14	13	12	11	10	9	8	7	6	5	4	3	2	1
22	23	24	25	26	27	28	29	30	31	32	33	34	35	36	37	38	39	40	41	42

10	9	8	7	6	5	4	3	2	1
11	12	13	14	15	16	17	18	19	20
30	29	28	27	26	25	24	23	22	21
10	9	8	7	6	5	4	3	2	1
11	12	13	14	15	16	17	18	19	20

10	9	8	7	6	5	4	3	2	1
11	12	13	14	15	16	17	18	19	20
30	29	28	27	26	25	24	23	22	21
10	9	8	7	6	5	4	3	2	1
11	12	13	14	15	16	17	18	19	20

21	20	19	18	17	16	15	14	13	12	11	10	9	8	7	6	5	4	3	2	1
22	23	24	25	26	27	28	29	30	31	32	33	34	35	36	37	38	39	40	41	42
63	62	61	60	59	58	57	56	55	54	53	52	51	50	49	48	47	46	45	44	43
21	20	19	18	17	16	15	14	13	12	11	10	9	8	7	6	5	4	3	2	1
22	23	24	25	26	27	28	29	30	31	32	33	34	35	36	37	38	39	40	41	42

10	9	8	7	6	5	4	3	2	1
11	12	13	14	15	16	17	18	19	20
30	29	28	27	26	25	24	23	22	21
10	9	8	7	6	5	4	3	2	1
11	12	13	14	15	16	17	18	19	20

10	9	8	7	6	5	4	3	2	1
11	12	13	14	15	16	17	18	19	20
30	29	28	27	26	25	24	23	22	21
10	9	8	7	6	5	4	3	2	1
11	12	13	14	15	16	17	18	19	20

21	20	19	18	17	16	15	14	13	12	11	10	9	8	7	6	5	4	3	2	1
22	23	24	25	26	27	28	29	30	31	32	33	34	35	36	37	38	39	40	41	42
63	62	61	60	59	58	57	56	55	54	53	52	51	50	49	48	47	46	45	44	43
21	20	19	18	17	16	15	14	13	12	11	10	9	8	7	6	5	4	3	2	1
22	23	24	25	26	27	28	29	30	31	32	33	34	35	36	37	38	39	40	41	42

10	9	8	7	6	5	4	3	2	1
11	12	13	14	15	16	17	18	19	20
30	29	28	27	26	25	24	23	22	21
10	9	8	7	6	5	4	3	2	1
11	12	13	14	15	16	17	18	19	20
30	29	28	27	26	25	24	23	22	21
10	9	8	7	6	5	4	3	2	1
11	12	13	14	15	16	17	18	19	20

9	8	7	6	5	4	3	2	1	
11	12	13	14	15	16	17	18	19	20
30	29	28	27	26	25	24	23	22	21
10	9	8	7	6	5	4	3	2	1
11	12	13	14	15	16	17	18	19	20
30	29	28	27	26	25	24	23	22	21
10	9	8	7	6	5	4	3	2	1
11	12	13	14	15	16	17	18	19	20

21	20	19	18	17	16	15	14	13	12	11	10	9	8	7	6	5	4	3	2	1
22	23	24	25	26	27	28	29	30	31	32	33	34	35	36	37	38	39	40	41	42
63	62	61	60	59	58	57	56	55	54	53	52	51	50	49	48	47	46	45	44	43
21	20	19	18	17	16	15	14	13	12	11	10	9	8	7	6	5	4	3	2	1
22	23	24	25	26	27	28	29	30	31	32	33	34	35	36	37	38	39	40	41	42
63	62	61	60	59	58	57	56	55	54	53	52	51	50	49	48	47	46	45	44	43
21	20	19	18	17	16	15	14	13	12	11	10	9	8	7	6	5	4	3	2	1
22	23	24	25	26	27	28	29	30	31	32	33	34	35	36	37	38	39	40	41	42

10	9	8	7	6	5	4	3	2	1
11	12	13	14	15	16	17	18	19	20
10	9	8	7	6	5	4	3	2	1
11	12	13	14	15	16	17	18	19	20

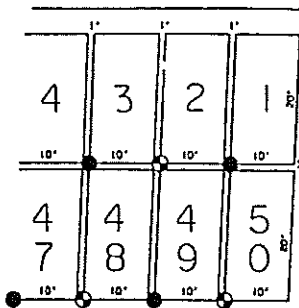
10	9	8	7	6	5	4	3	2	1
12	13	14	15	16	17	18	19	20	21
8	7	6	5	4	3	2	1	V	V

21	20	19	18	17	16	15	14	13	12	11	10	9	8	7	6	5	4	3	2	1
30	31	32	33	34	35	36	37	38	39	40	41	42								
2	1	10	9	8	7	6	5	4	3	2	1									

MERLE
HAY
MONUMENT

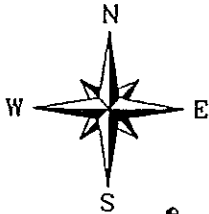
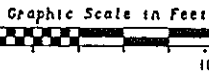
U. S. HWY. NO. 30

SECOND ADDITION GLIDDEN CEMETERY



**TYPICAL
LOT
LAYOUT**

See Block Notes



LEGEND

- • R.R. Spike Set
- • Aluminum Monument Set
- • Iron Pin Found

FIELD NOTES:

LOT 2 OF THE SOUTHEAST QUARTER OF THE
SOUTHWEST QUARTER OF SECTION 19 - T84N
- R33W OF THE 5th P.M., CARROLL
COUNTY, IOWA.

CERTIFICATION:

I HEREBY CERTIFY THAT THIS PLAT,
LEGAL DESCRIPTION AND SURVEY WERE
PREPARED BY ME OR UNDER MY PERSONAL
SUPERVISION AT THE REQUEST OF THE
CITY OF GLIDDEN AND THAT I AM A DULY
REGISTERED LAND SURVEYOR UNDER THE
LAWS OF THE STATE OF IOWA.

9-6-91
DATE

Michael G. Semke
MICHAEL G. SEMKE
R.L.S. NO. 10318

THE ABOVE DESCRIBED PARCEL SHALL
HEREAFTER BE KNOWN AS SECOND ADDITION
TO THE GLIDDEN CEMETERY AND SHALL
HEREBY BE DIVIDED INTO BLOCKS AND
LOTS AS SHOWN HEREON AND SHALL
HEREAFTER BE KNOWN AS SAID BLOCKS
AND LOTS.

